



# Mechanical Swing Nozzle

MS-60/MS-70 (Nozzle Unit)

MS-60G/MS-70G (with Gun)

Easy-to-Start

Carbon  
Neutrality  
Measures

Energy consumption reduced !!

**3 times or more power compared to the flat nozzle.**

Mechanical Swing Nozzle  
(Nozzle Unit)



▲MS-60



▲MS-70

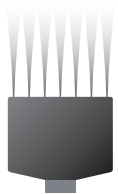
**US Pat. US9321068B2**

## Main Usage

- ▶ Dust removal before painting
- ▶ Drying after washing, etc.



Conventional wide angle nozzle (not ours)  
Nozzle shape and injection image



Nozzle Type A

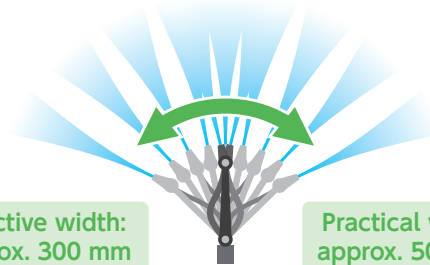


Nozzle Type B

In conventional wide-angled nozzles, the tip of the nozzle is extended. As a result the air pressure drops and cannot work efficiently. (Energy is dispersed)

## Ga-Rew Mechanical Swing Nozzle

Injection image



Effective width:  
approx. 300 mm

Practical width:  
approx. 500 mm

The Mechanical Swing Nozzle that Ga-Rew has invented has just one hole on the nozzle which retains most of the air pressure. As a result it **swings at high speeds** and **the compressed air reaches its target effectively.**

### Specifications of Mechanical Swing Nozzle

Type	MS-60 (Nozzle Unit)	MS-60G (with Gun)	MS-70 (Nozzle Unit)	MS-70G (with Gun)
Dimensions	90 mm	197 mm	100 mm	207 mm
Nozzle Diameter	2.3 mm		2.0 mm	
Air Pressure	0.4 to 0.6 MPa		0.3 to 0.5 MPa	
Air Flow Rate	175 liters/min (at 0.4 MPa) to 215 liters/min (at 0.6 MPa)		130 liters/min (at 0.3 MPa) to 165 liters/min (at 0.5 MPa)	
Operating Angle	50 to 100 degrees		60 to 120 degrees	
Operating Temperature	10 to 50 deg. C (50 to 122 deg F)		10 to 50 deg. C (50 to 122 deg F)	
Dry Weight	35 grams	265 grams	35 grams	265 grams
Connection Part	R1/8	Male Coupler (CUPLA)	R1/8	Male Coupler (CUPLA)

Note: These products require compressed air, please prepare an air compressor.

## GA-REW Co., Ltd.

E-mail: kaga@ga-rew.com Website: www.ga-rew.com/en/

Telephone: +81 3 6765 0099 Facsimile: +81 3 6762 0909

5-1-7 Nishiogi-kita, Suginami-ku, Tokyo 167-0042 Japan

Please visit our website or Email us for inquiries.



Design and specification are subject to change without notice.  
Please visit our website for the latest information.  
October 2018

GA-REW